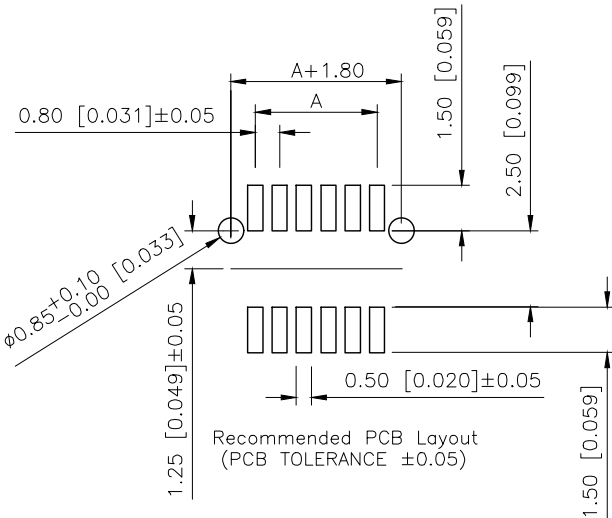
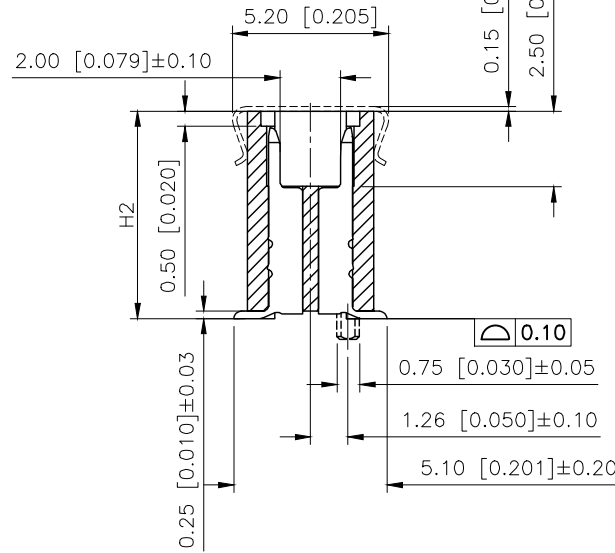
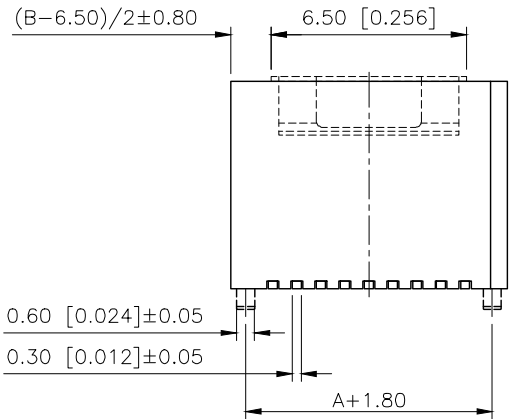
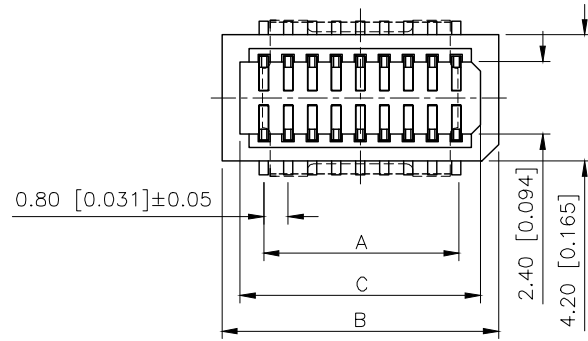


| REVISIONS |         |          |             |           |        |
|-----------|---------|----------|-------------|-----------|--------|
| REV.      | ECN NO. | LOCATION | DESCRIPTION | DATE      | DESIGN |
| A1        | N/A     |          |             | 2025.3.19 |        |
| A2        | /       |          |             | 2026.3.27 |        |



Specifications( )  
 1.Voltage rating( ):30V AC DC  
 2.Current rating( ):0.5A AC/DC  
 3.Withstanding voltage( ): 500V AC/minute  
 4.Insulation resistance( ):100MΩ Min  
 5.Contact resistance( ):30mΩ Max  
 6.Temperature range( ): -40 ~+125  
 Material( )  
 1.Pin material Copper Alloy  
 2.Finished Gold plated  
 3.Housing material LCP UL94V-0  
 4.Housing color Nature

PART NO.:

X0801 F V S-90 B S-LP V01

Series No  
 Category:F-Female  
 Welding Board Angle:V-Stright 180°  
 Welding Way: S-SMT  
 Row No.Pin No:XX-04-100P  
 Height(H2):A=3.50mm;B=5.40;  
 C=5.90;D=6.90;E=7.90  
 Special No:S-With positioning Column  
 Material:LP-LCP UL 94V-0  
 Plating:V01-Gold Flash

| NO. of contacts | Dimensions |       |       |
|-----------------|------------|-------|-------|
|                 | A.         | B.    | C.    |
| 04              | 0.80       | 3.60  | 2.40  |
| 06              | 1.60       | 4.40  | 3.20  |
| 08              | 2.40       | 5.20  | 4.00  |
| 10              | 3.20       | 6.00  | 4.80  |
| 12              | 4.00       | 6.80  | 5.60  |
| 14              | 4.80       | 7.60  | 6.40  |
| 16              | 5.60       | 8.40  | 7.20  |
| 18              | 6.40       | 9.20  | 8.00  |
| 20              | 7.20       | 10.00 | 8.80  |
| 22              | 8.00       | 10.80 | 9.60  |
| 24              | 8.80       | 11.60 | 10.40 |
| 26              | 9.60       | 12.40 | 11.20 |
| 28              | 10.40      | 13.20 | 12.00 |
| 30              | 11.20      | 14.00 | 12.80 |
| 32              | 12.00      | 14.80 | 13.60 |
| 34              | 12.80      | 15.60 | 14.40 |
| 36              | 13.60      | 16.40 | 15.20 |
| 38              | 14.40      | 17.20 | 16.00 |
| 40              | 15.20      | 18.00 | 16.80 |
| 50              | 19.20      | 22.00 | 20.80 |
| 60              | 23.20      | 26.00 | 24.80 |
| 70              | 27.20      | 30.00 | 28.80 |
| 80              | 31.20      | 34.00 | 32.80 |
| 90              | 35.20      | 38.00 | 36.80 |
| 100             | 39.20      | 42.00 | 40.80 |

| MATING HEIGHT | PLUG(H1) | SOCKET(H2) |
|---------------|----------|------------|
| 4.90          | 3.55     | 3.50       |
| 6.50          | 3.55     | 5.40       |
| 7.00          | 3.55     | 5.90       |
| 8.00          | 3.55     | 6.90       |
| 9.00          | 3.55     | 7.90       |

|                     |              |               |             |                     |
|---------------------|--------------|---------------|-------------|---------------------|
| X0801FVS-90BS-LPV01 | LCP UL 94V-0 | Copper Alloy  | Gold plated | X0801W              |
| PART NO.            | MATERIAL     | MATERIAL(PIN) | FINISH(PIN) | Suitable XKB Female |

|                        |       |
|------------------------|-------|
| AuGLAR                 | ±5°   |
| X.                     | ±0.40 |
| X.x                    | ±0.30 |
| X.xx                   | ±0.20 |
| X.xxx                  | ±0.15 |
| UNSPECIFIED TOLERANCES |       |



|          |             |  |
|----------|-------------|--|
| DESIGN   | VIEW:       | MODEL TYPE:<br>0.8mm BTB Style Connector |
| CHECKED  | UNIT: mm/in | PART NO.:<br>X0801FVS-90BS-LPV01         |
| APPROVED | SIZE: A4    | DWG NO.:                                 |

XKB INDUSTRIAL PRECISION CO.,LIMITED

|       |      |          |
|-------|------|----------|
| SCALE | PAGE | REVISION |
| N/A   | 1/1  | A2       |